

In today's heavy Industry BK-Services is an experienced and highly estimated partner for high quality products and a flexible and innovative supplier of all type of Steel Plant Equipment.

Topic 01:

150 mT DC Electric Arc Furnace Bottom Shell for Steel Plant in Eastern Germany



Topic 02:

22 Inch (559 mm) Current Conducting Electrode Arms For Electric Arc Furnace in North America



BK-Services GmbH, Zunftstrasse 20, 77694 Kehl-Marlen Tel.: +49 (0) 7854 186 82
Fax: +49 (0) 7854 186 83 - e-mail: fischer@bk-services.de

Contact USA: Erwin Schmitt (704) 633-6082

01:

150 Metric ton DC Electric Arc Furnace Bottom for Steel Plant in Eastern Germany

In April of 2006 BK-Services received an order from ARCELOR Thüringen in Eastern Germany to supply a complete DC-Bottom Shell for a 150 Ton DC-Arc Furnace. Complete machining of split flange between lower and middle part (DIA 7600mm). Tolerance was only 0.5 mm!

After manufacturing in limited time the Bottom Shell was shipped in one unit from our plant in Kehl Germany on time on September 19, 2006.

Installation & commissioning in October 2006 by customer without delays.

TECHNICAL DATA

Shell Diameter	7600 mm
Furnace Tap	125 mT
Tap To Tap	55 min
Weight incl. Anode Transformer	65000 kG
Bottom Electrode	VAI
Electrode Dia	710 / 760 mm
Weight Lower Shell	55000 kG



Quality Steelmaking.....

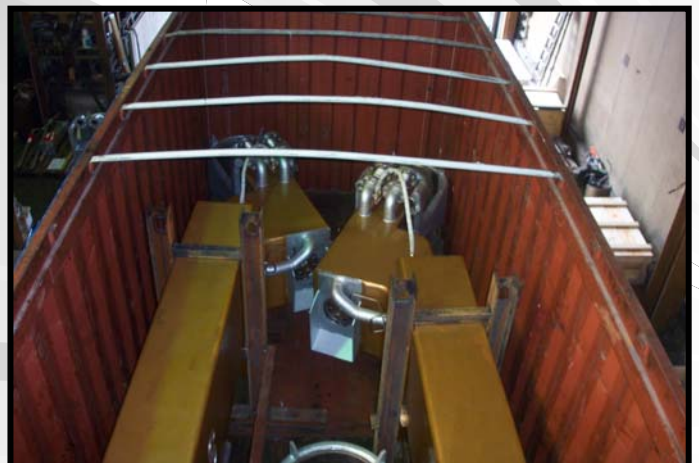
02:

22 Inch (559 mm) Current Conducting Electrode Arms for Electric Arc Furnace in North America

In March of 2006 BK-Services received an order to supply ALTA Steel in Canada with one set of Current Conducting Copper Electrode Arms for a 85 mT EAF.

After a complete basic and detail design, manufacturing and testing the arms were shipped from our plant in Kehl Germany on time on September 15, 2006.

Installation and commissioning in October/November 2006.



TECHNICAL DATA

Furnace	EMCO
Shell Diameter	5500 mm
Furnace Tap Weight	85 mT
Tap To Tap	54 min
Transformer	64 MVA
Electrode Diameter	559 mm
HC Cables	4 each

.... from one Source !

03:

Previous Projects at BK-Services:

Copper Electrode Arms // Caster Segment System // Special Compensators

Upper Photo:

One Set Copper Current Conducting Electrode Arms for Edelstahlwerke Buderus in Wetzlar Germany.

July 2006



Upper and Middle Photo:

Manufacturing of complete Caster Segment Sections of six (6) Strand Continuous Caster in Northern Germany at Edelstahlwerke Krupp Siegen Südwestfalen. Installation and commissioning by customer with external site personnel.

Installation without delays and without any necessary modifications on site.

August 2006



Lower Photo:

Fabrication of 39 each Insulation and Compensator Segments for SHELL-OIL Industry DN150, PN 160 bar, Stroke 1200mm.

October 2006

